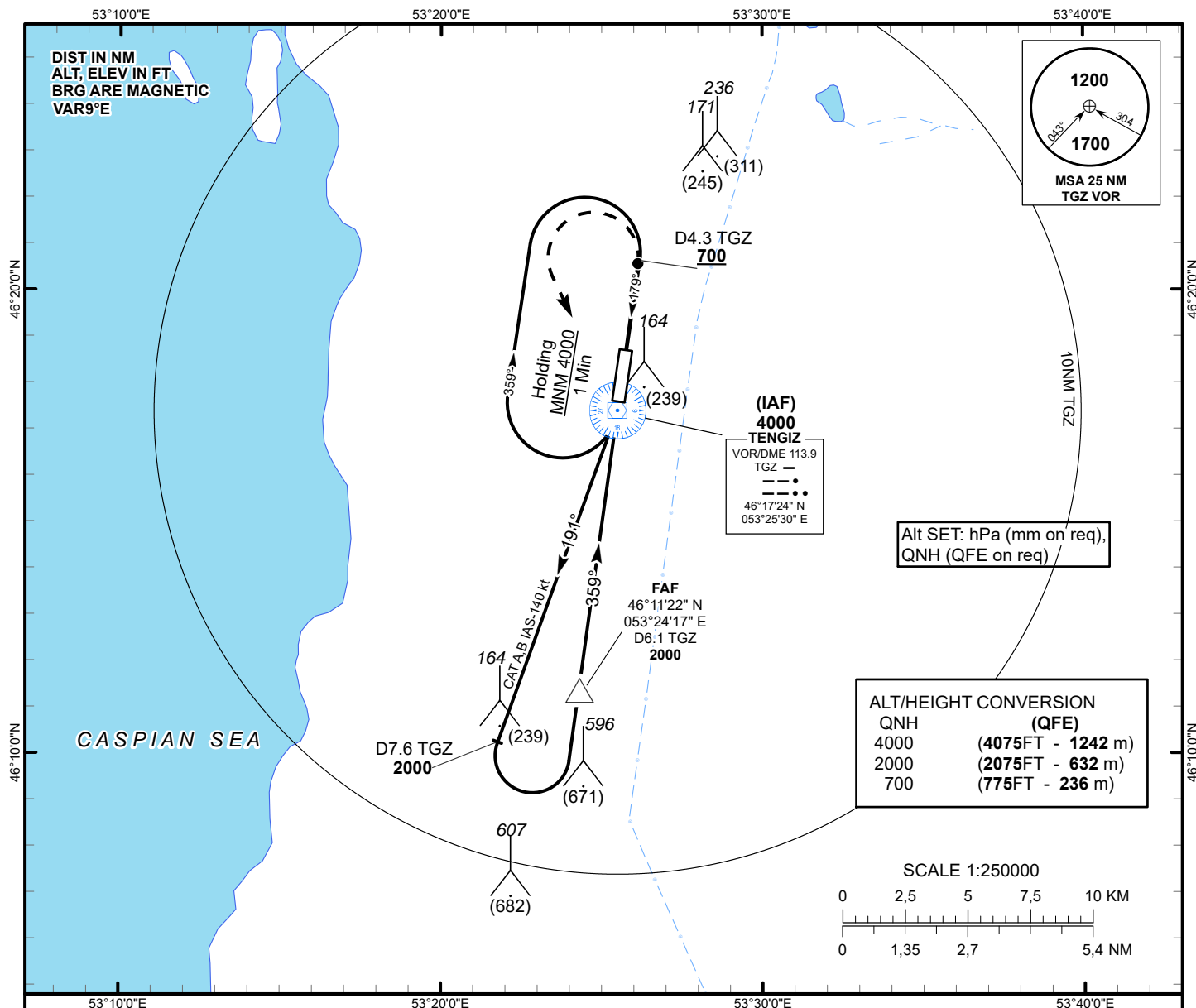


INSTRUMENT  
APPROACH  
CHART - ICAOAERODROME ELEV -75FT  
HEIGHTS RELATED TO  
AD ELEV

TENGIZ TOWER 119.2

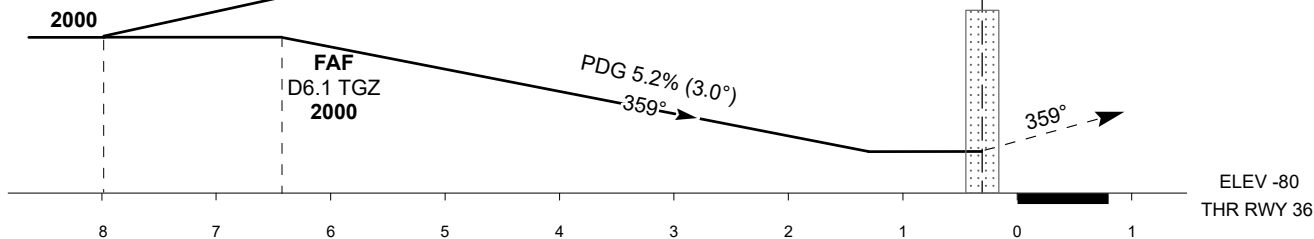
TENGIZ  
VOR/DME  
RWY 36

## MISSED APPROACH

Climb on track 359° to 700 or above,  
outbound to D4.3NM TGZ, turn LEFT to TGZ.  
Climb initially to 2000, then as directed by ATC.

## RADIO FAILURE:

in case of RCF climb to 4000 to TGZ and join  
to holding pattern. Missed approach turn speed  
limited to 150 Kt IAS maximum

TRANSITION ALT  
10000IAF  
4000VOR/DME  
TGZ  
MAPt

CHANGE: Direction; Revised.

Aircraft Category		A	B	C	D	DIST to THR	NM	6.4	5	4	3	2	1	
Straight-in Approach OCA/H						DME TGZ	NM	6.1	4.7	3.7	2.7	1.7	0.7	
	VOR/DME	200(280)	200(280)			ALTITUDE	FT	2000	1560	1242	923	605	287	
						HEIGHT	FT	(2080)	(1640)	(1322)	(1003)	(685)	(367)	
Aerodrome Operating Minima MDH ft x RVR(CMV)	VOR/DME													
						GS	kt	70	80	90	100	110	120	130
						FAF-MAPT (6.1 NM)	min:sec	5:14	4:35	4:04	3:40	3:20	3:03	2:49
						Desc.Rate(5.2%)	ft/min	370	420	480	530	580	640	690

TENGIZ (UATZ)  
VOR/DME RWY36

AERONAUTICAL DATA TABULATION

VOR approach to RWY36 from TGZ VOR/DME	
Fix/point	Coordinates
TGZ VOR/DME (IAF)	46° 17' 23.9"N 053° 25' 29.9"E
D6.1 TGZ (FAF)	46° 11' 22.2"N 053° 24' 16.7"E
THR RWY36	46° 17' 44.11"N 053° 25' 34.00"E
Final approach descent angle is 3.0°	